

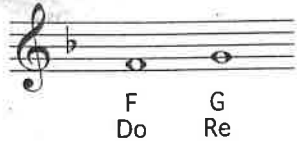
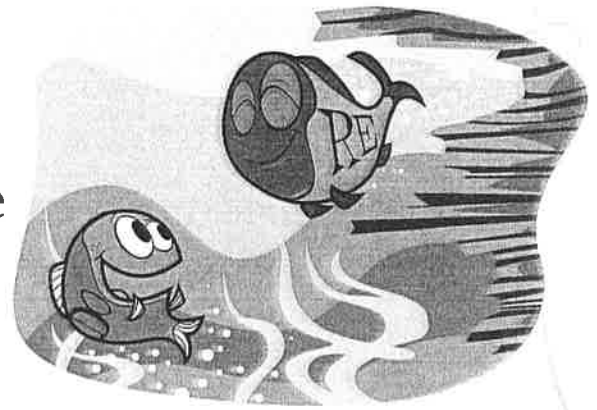
F Major #1



by Audrey Snyder

More practice with Do and Re

This page corresponds to pages 26 and 27 in the October/November 2006 magazine.



Ex. 1 *Sing: Do*

Ex. 2 *Sing: Do*

Ex. 3 *Sing: Do*

Ex. 4 *Sing: Do*

Ex. 5 *Sing: Do*

Ex. 6 *Sing: Do*

Challenge!

Ex. 7 *Sing: Do*

Track numbers refer to the CD included in the October/November 2006 magazine.

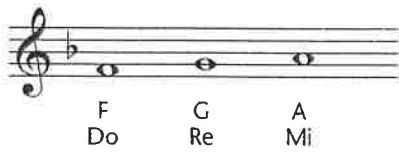
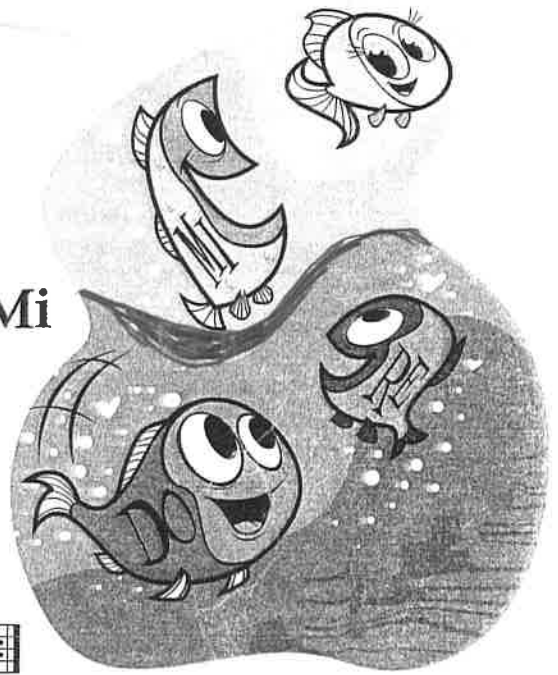
The original subscriber of Music Express has permission to reproduce this page for instructional use only. Any other use is strictly prohibited.



by Audrey Snyder

More Practice with Do, Re and Mi

This page corresponds to pages 28 and 29 in the December 2006 magazine.



CD 26
Ex. 1



CD 25
Ex. 2



More Practice with Half Notes and Half Rests

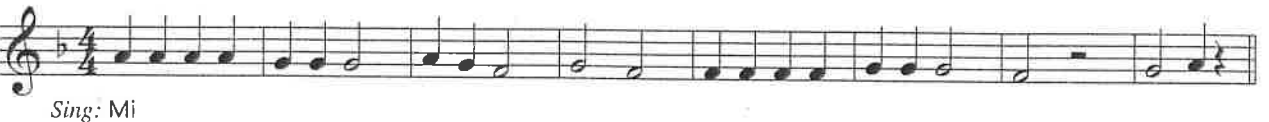
CD 26
Ex. 3



CD 26
Ex. 4



CD 26
Ex. 5



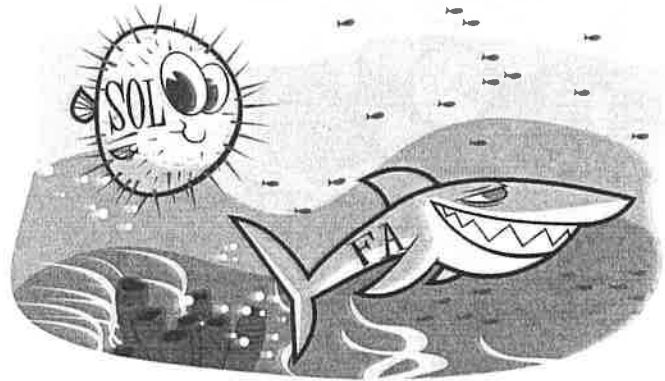
CD 26
Ex. 6



Track numbers refer to the CD included in the December 2006 magazine.
The original subscriber of Music Express has permission to reproduce this song for instructional use only.
Copyright © 2006 by HAL LEONARD CORPORATION
International Copyright Secured All Rights Reserved



by Audrey Snyder



F#3

Adding Fa and Sol

This page corresponds to pages 28 and 29 in the January/February 2007 magazine.

F G A B \flat C
Do Re Mi Fa Sol

CD 26
Ex. 1 Sing: Do

CD 27
Ex. 2 Sing: Do

CD 26
Ex. 3 Sing: Mi

CD 27
Ex. 4 Sing: Sol

More Practice with Dotted Half Notes

CD 26
Ex. 5 Sing: Sol

CD 27
Ex. 6 Sing: Mi

Track numbers refer to the CD included in the January/February 2007 magazine.

The original subscriber of Music Express magazine has permission to reproduce this page for instructional use only. Any other use is strictly prohibited.

SOO

SING ON SIGHT

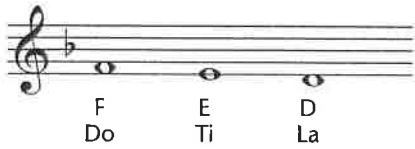
by Audrey Snyder

F #4



More practice with La and Ti

This page corresponds to pages 28 and 30 in the March/April 2007 magazine.



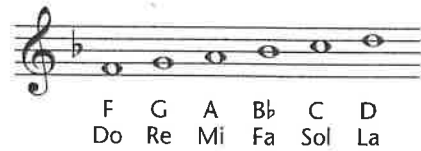
Ex. 1 Sing: Do Ti

Ex. 2 Sing: Do

Ex. 3 Sing: Do La

Ex. 4 Sing: Do

More Practice with high La



Ex. 5 Sing: Do La

Ex. 6 Sing: Mi

Track numbers refer to the CD included in the March/April 2007 magazine.

The original subscriber of Music Express magazine has permission to reproduce this page for instructional use only. Any other use is strictly prohibited.

Copyright © 2007 by HAL LEONARD CORPORATION
International Copyright Secured All Rights Reserved