

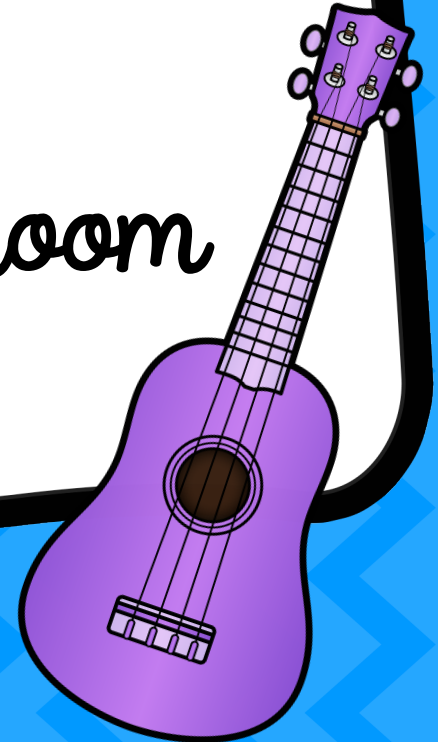
Sing & Strum MEGA Bundle



*Ukulele for the
elementary music classroom*

Jennifer Bailey

© Jennifer Bailey 2015. All rights reserved.





THANK YOU!!!

I hope you enjoy using these resources in your classroom. If possible, please leave feedback on this item at my store on TeacherPayTeachers.

The feedback helps me as a seller to continue to improve and make quality resources for you. It also helps me understand how you use them in your own musical setting.

Did you know that each time you provide feedback to a seller that you receive credits that you can use towards future purchases?

Enjoy!
Jennifer Bailey
SingToKids



Terms of Use

The contents of this files are for single classroom use only. As the purchaser, you have permission to copy these resources for use in your classroom or personal use.

You may not distribute this file to other people to be used personally or commercially. My resources are not to be offered for download on any website or distributed digitally by any means.

If you have questions, please message me on Facebook or e-mail me at Singtokids@gmail.com.

Thank you!
Jennifer Bailey



Instructions

Sing & Strum is a resource to teach ukuleles in the elementary music classroom. This bundle contains five sections:

- Strumming patterns & Chords
- I Chord Songs
- I-V Chord Songs
- I-IV-V Chord Songs
- Songs in other tonalities

I love teaching ukulele in a way that allows me to tie all of the other great learning we do in music. The strumming patterns allow my students to practice rhythmic reading while learning how to strum and play each individual chord. There are rhythm patterns with the strumming notated and rhythm patterns that were left blank. Invite your students to create different ways to strum. As you introduce each new chord, revisit the strum patterns with your students!

Credits

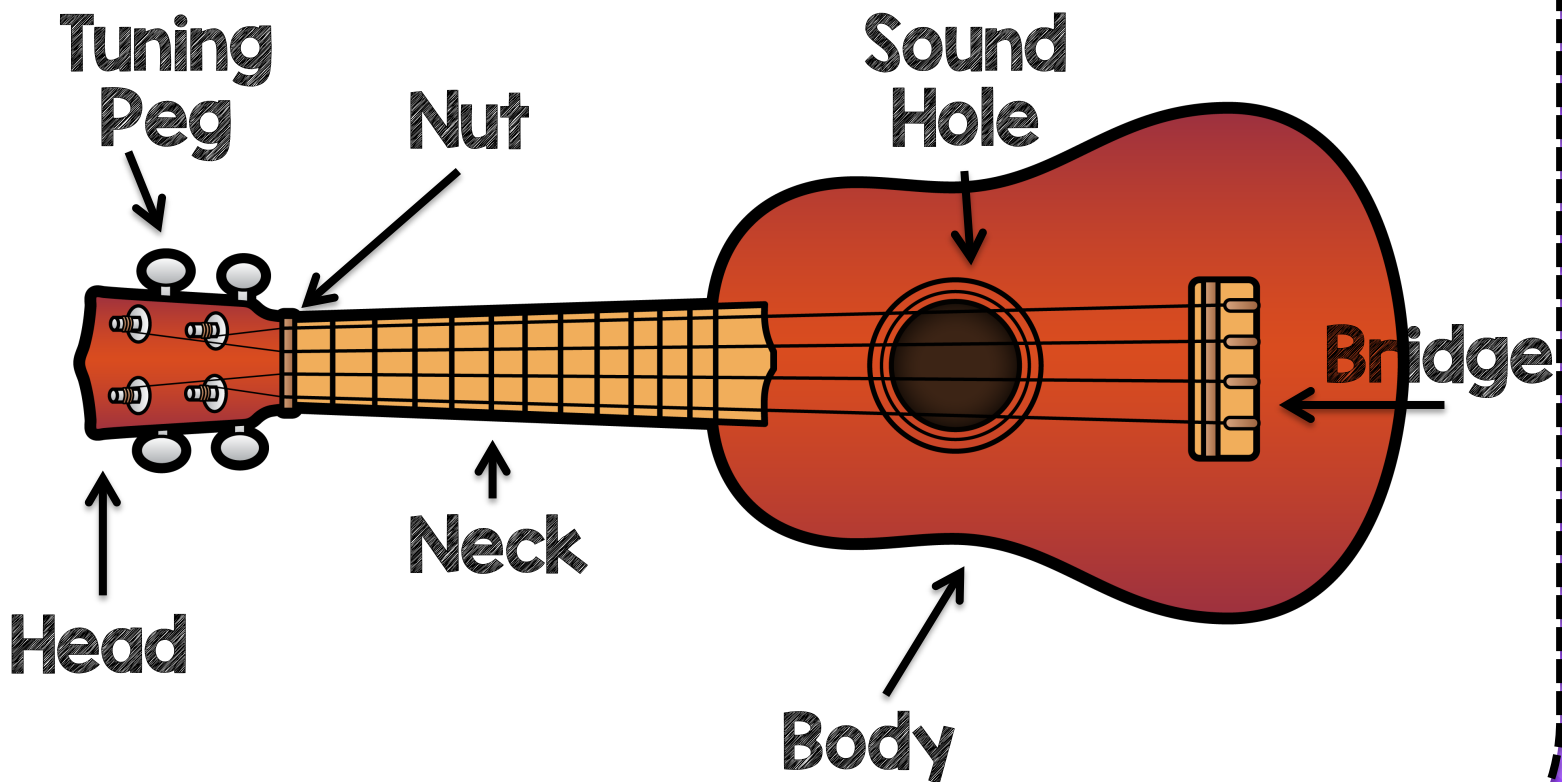
Thank you to these fabulous artist for their backgrounds,
fonts, frames and clip art!



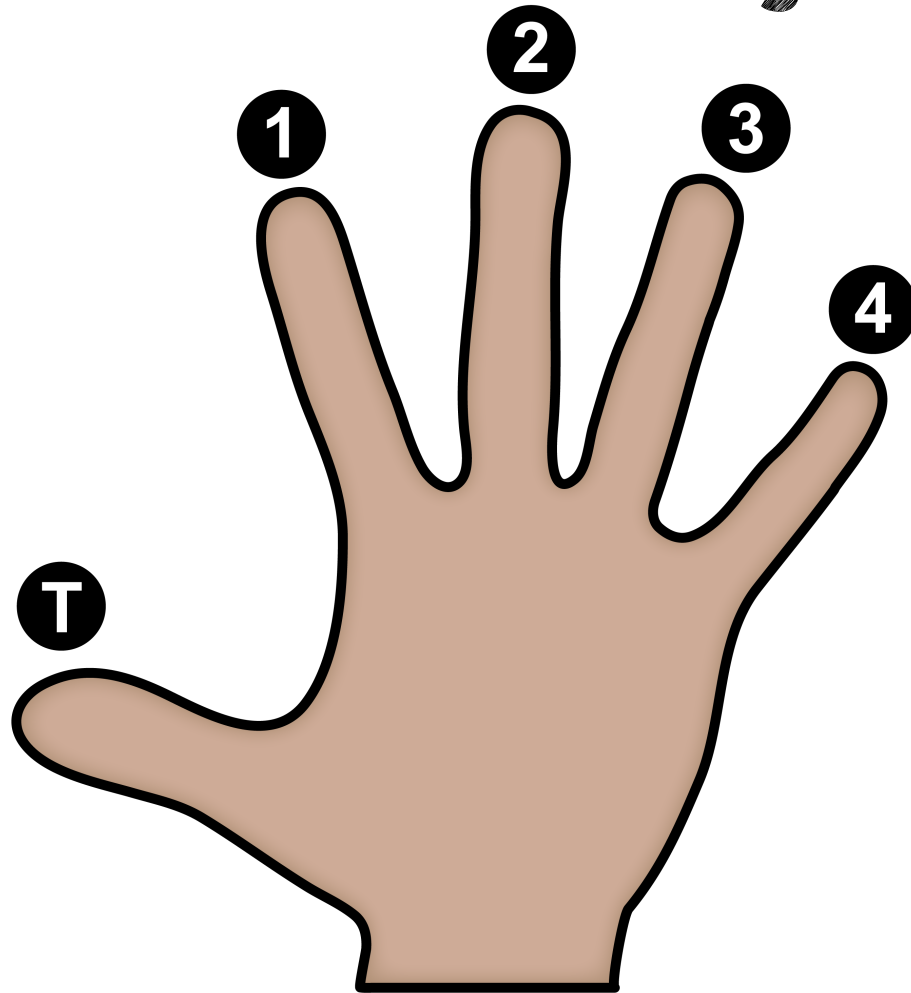
Ukulele:

Basics

Ukulele Basics: Instrument Overview



Ukulele Basics: Fingers



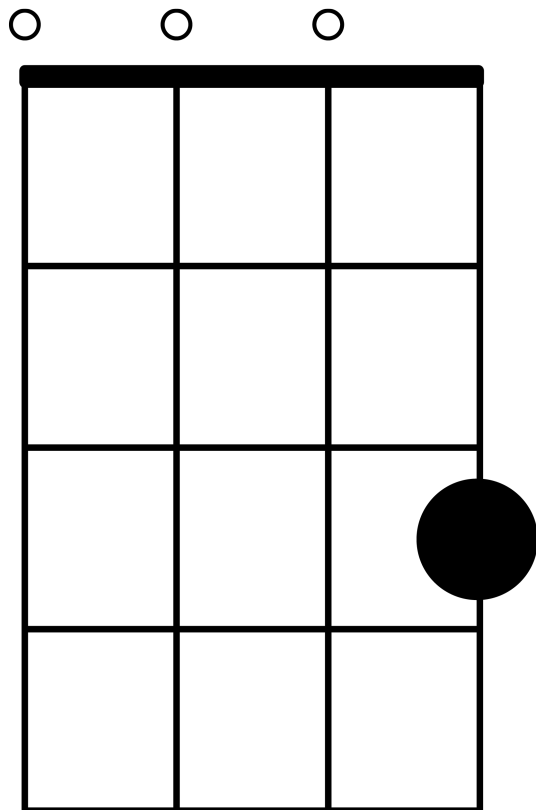
Ukulele Basics: Strings & Frets

G C E A

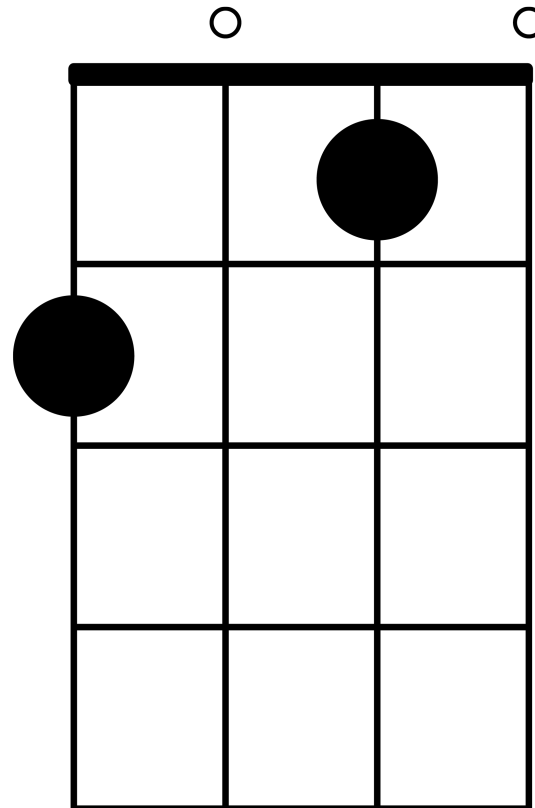
○ **String open:
no finger**

● **String closed:
finger down**

Ukulele Basics: C Chord

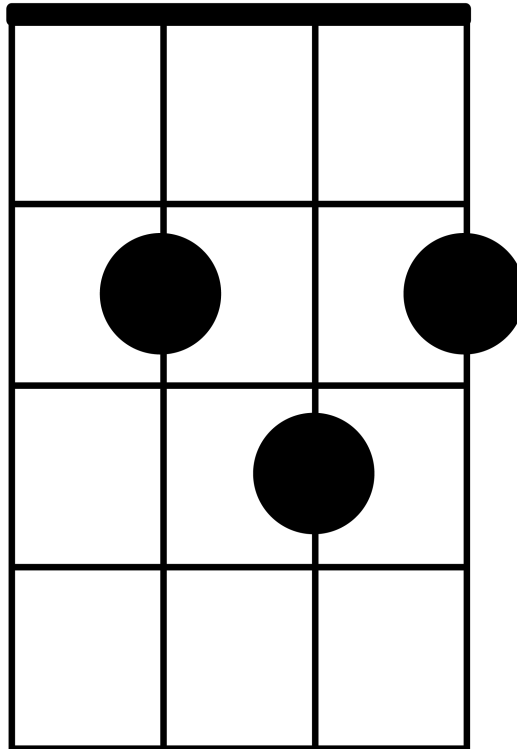


Ukulele Basics: F Chord



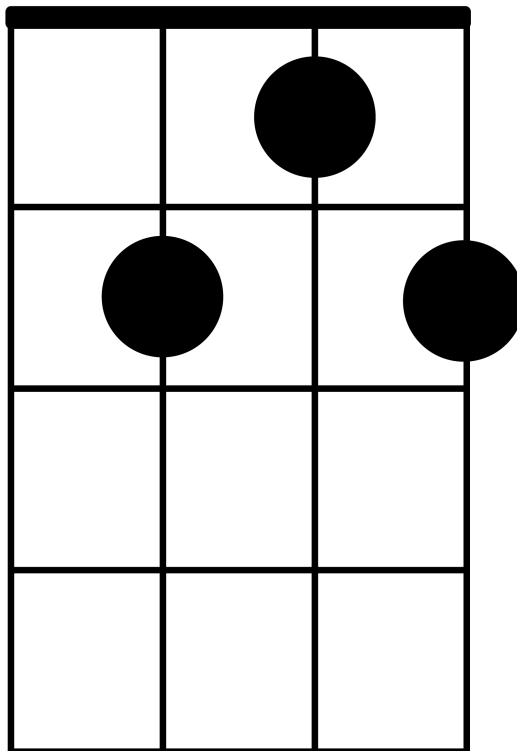
Ukulele Basics: G Chord

o

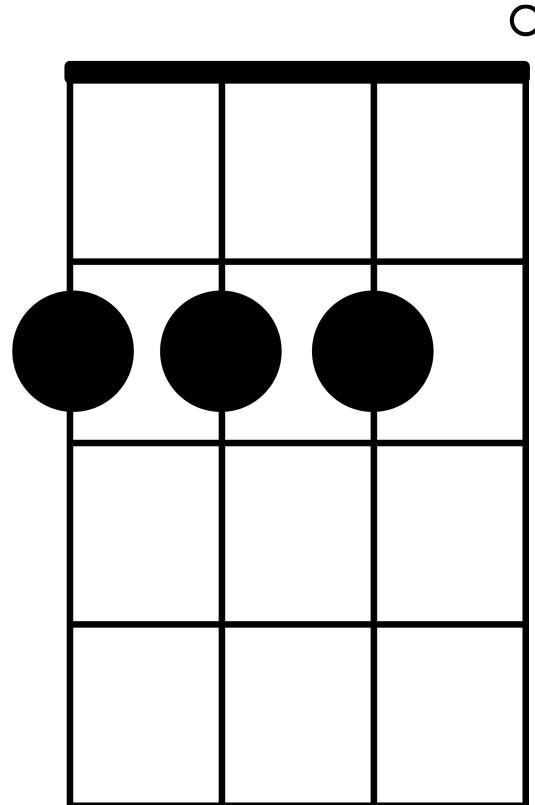


Ukulele Basics: G⁷ Chord

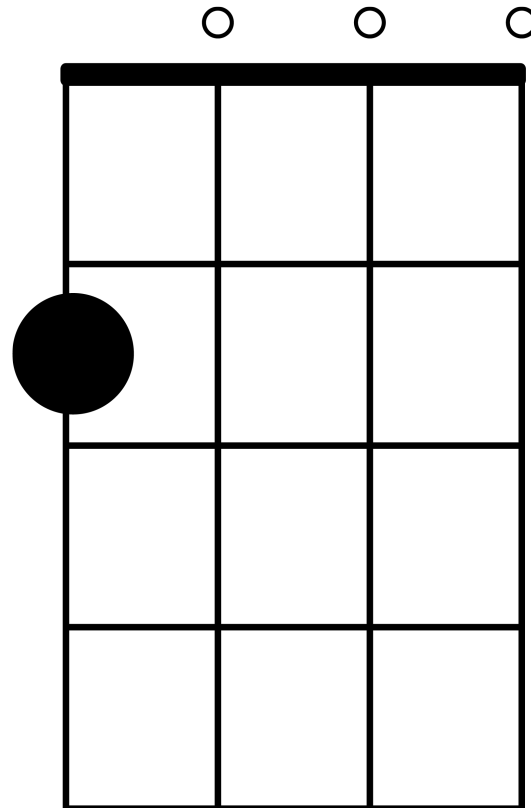
o



Ukulele Basics: D Chord

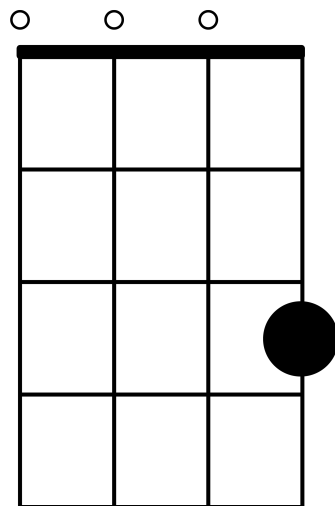


Ukulele Basics: a chord



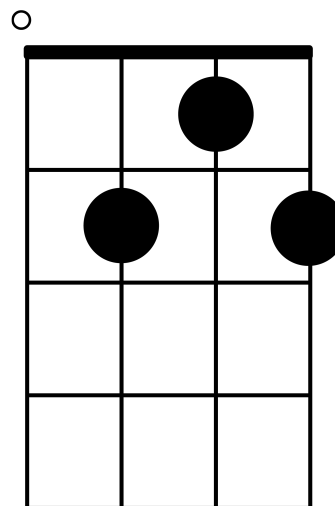
Chord Combinations: C-G⁷

C



I

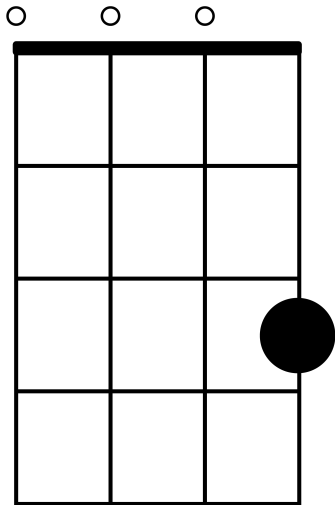
G⁷



V

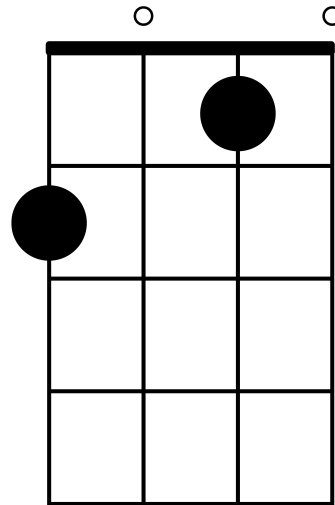
Chord Combinations: C-F-G⁷

C



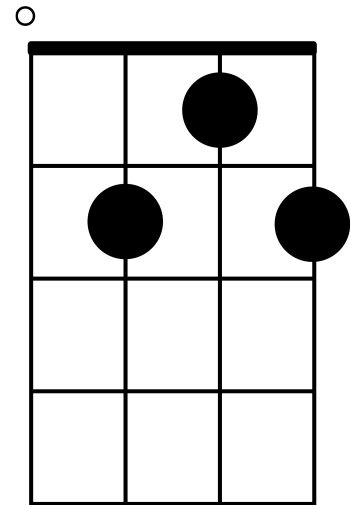
I

F



IV

G⁷

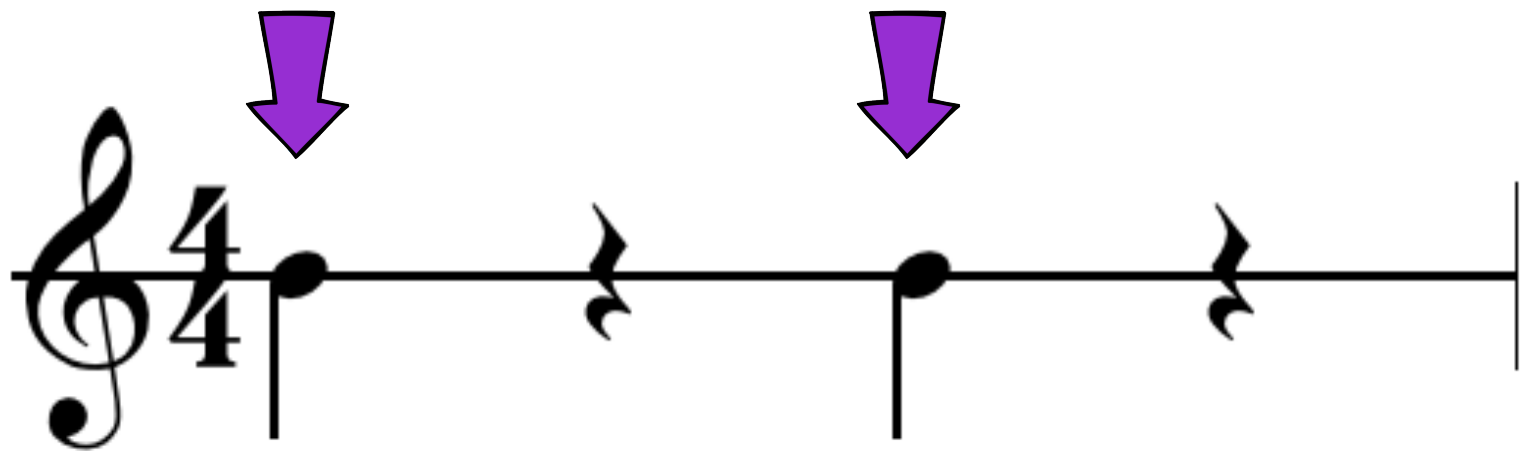


V

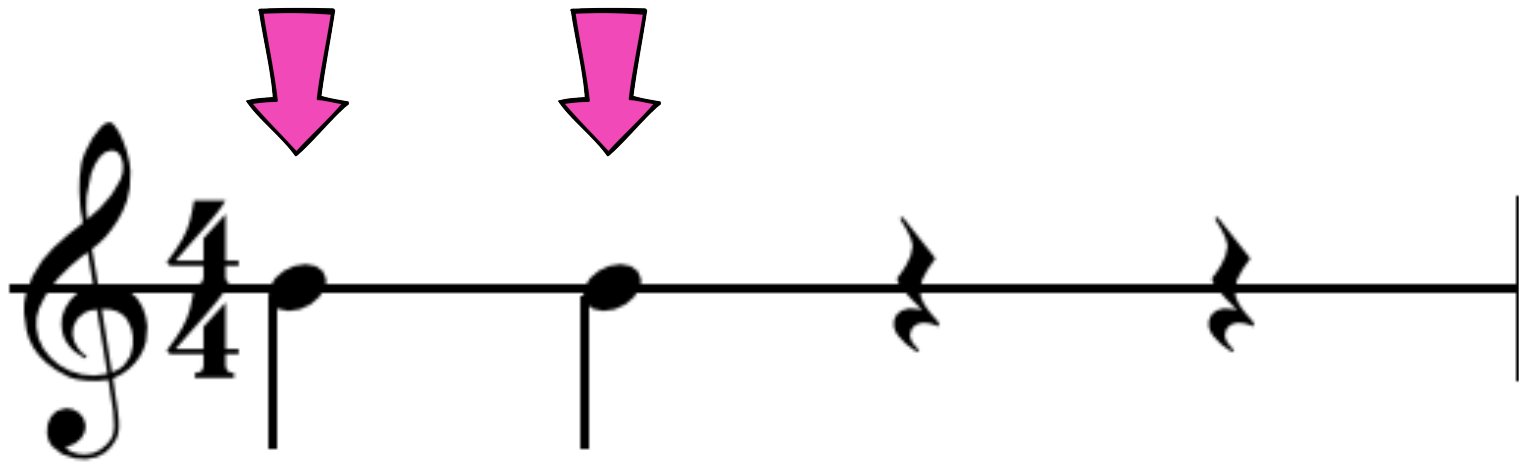
Ukulele:

Strumming Patterns

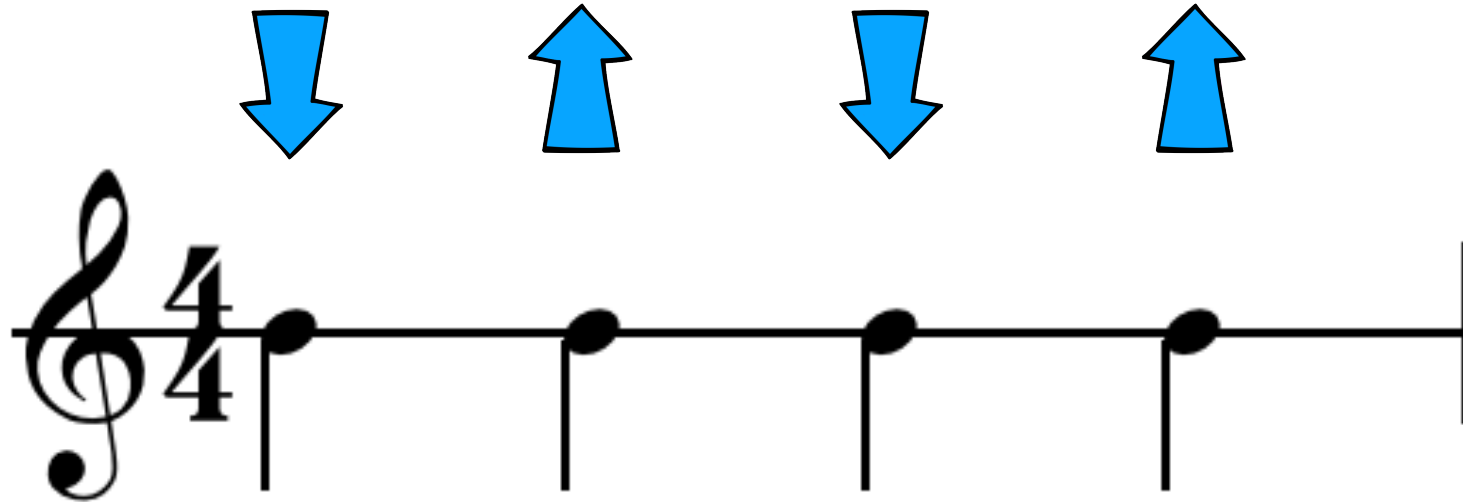
Strumming Pattern One:



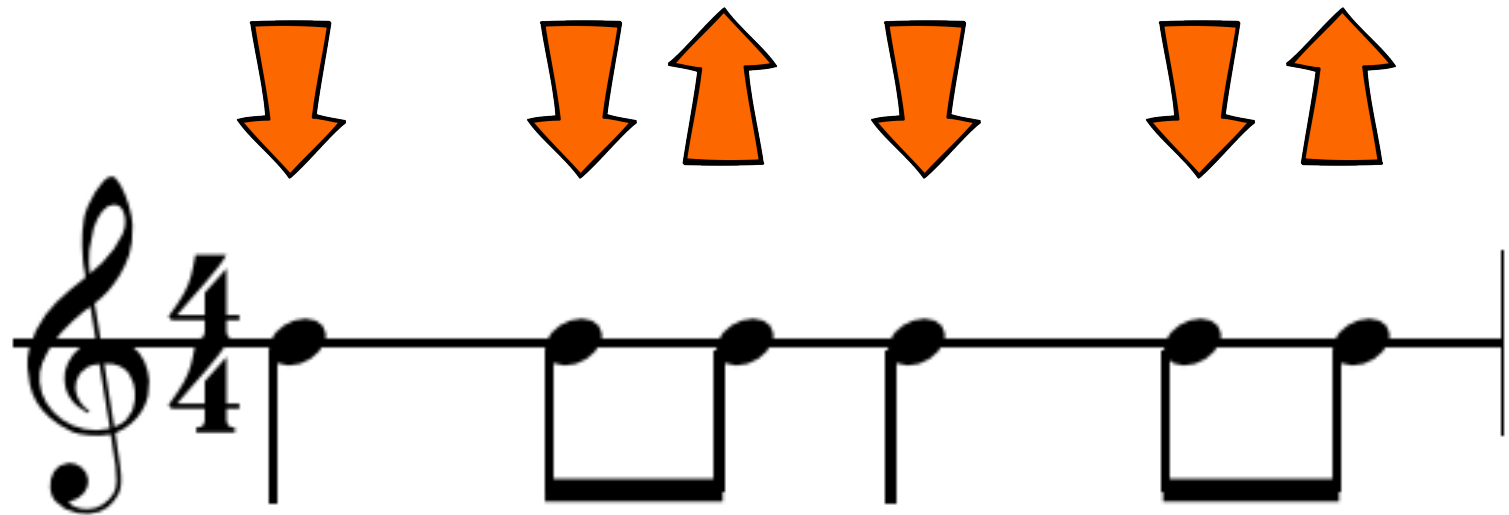
Strumming Pattern Two:



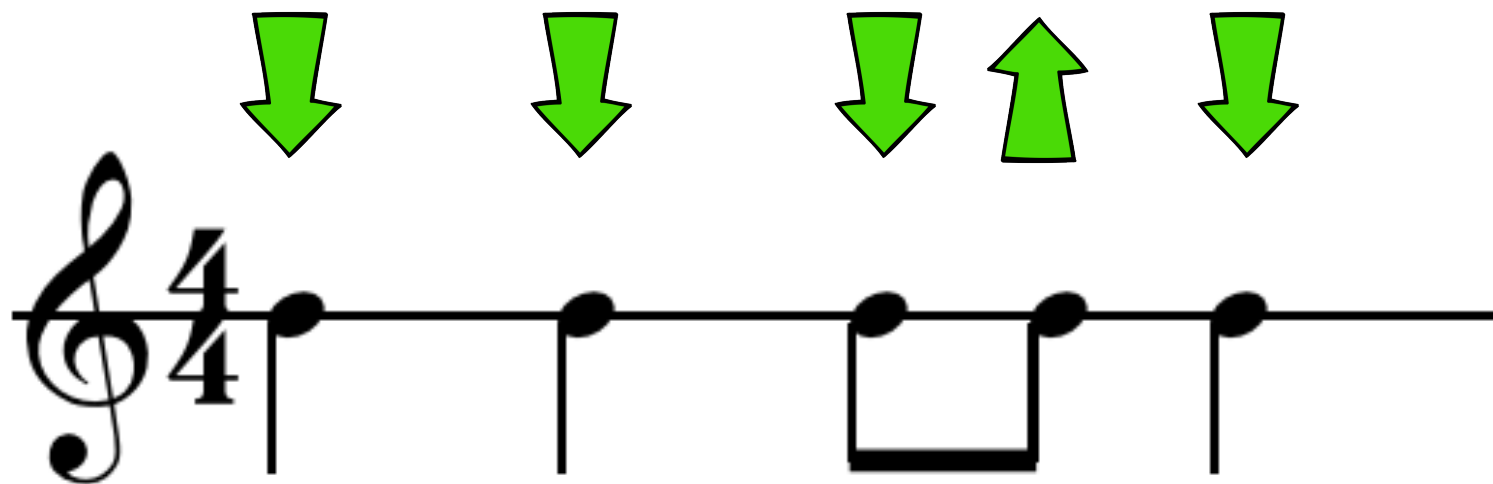
Strumming Pattern Three:



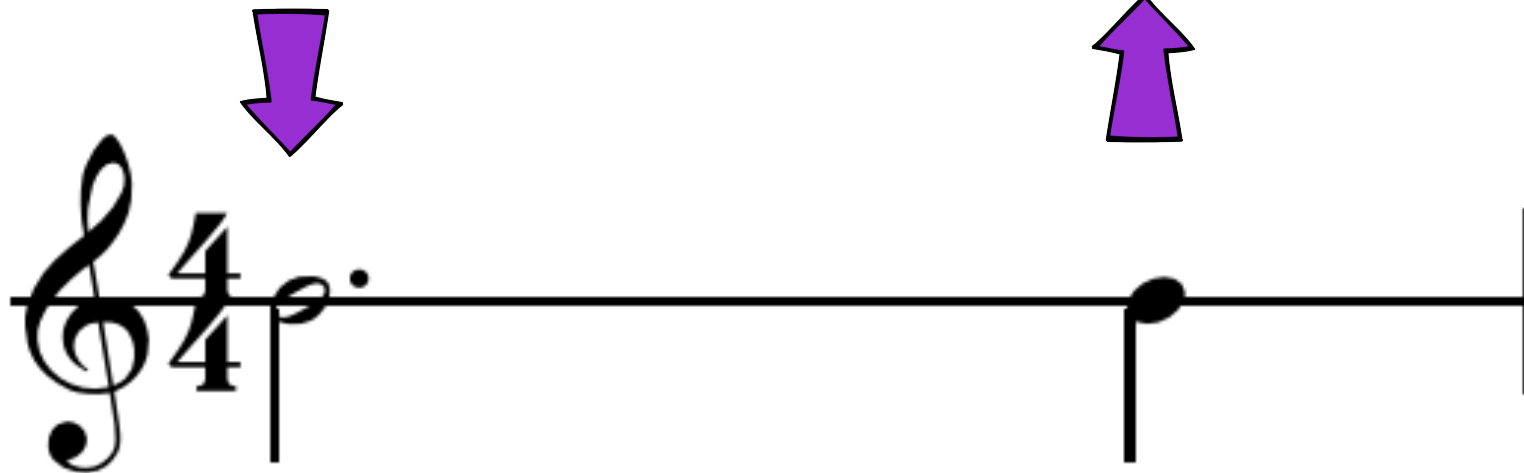
Strumming Pattern Four:



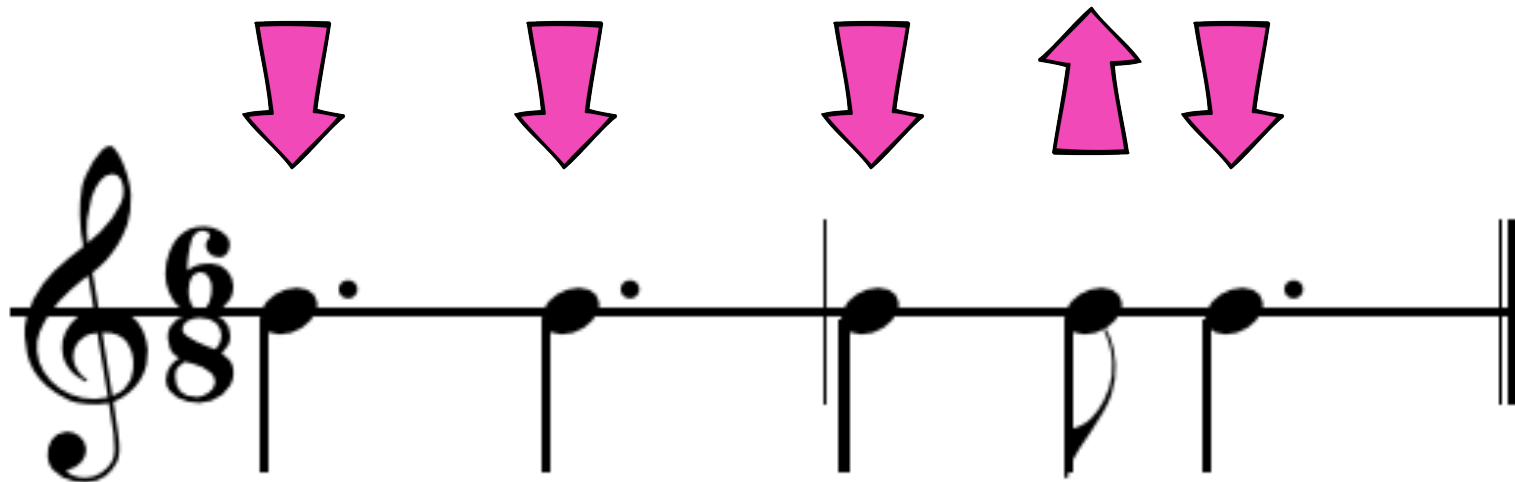
Strumming Pattern Five:



Strumming Pattern Six:



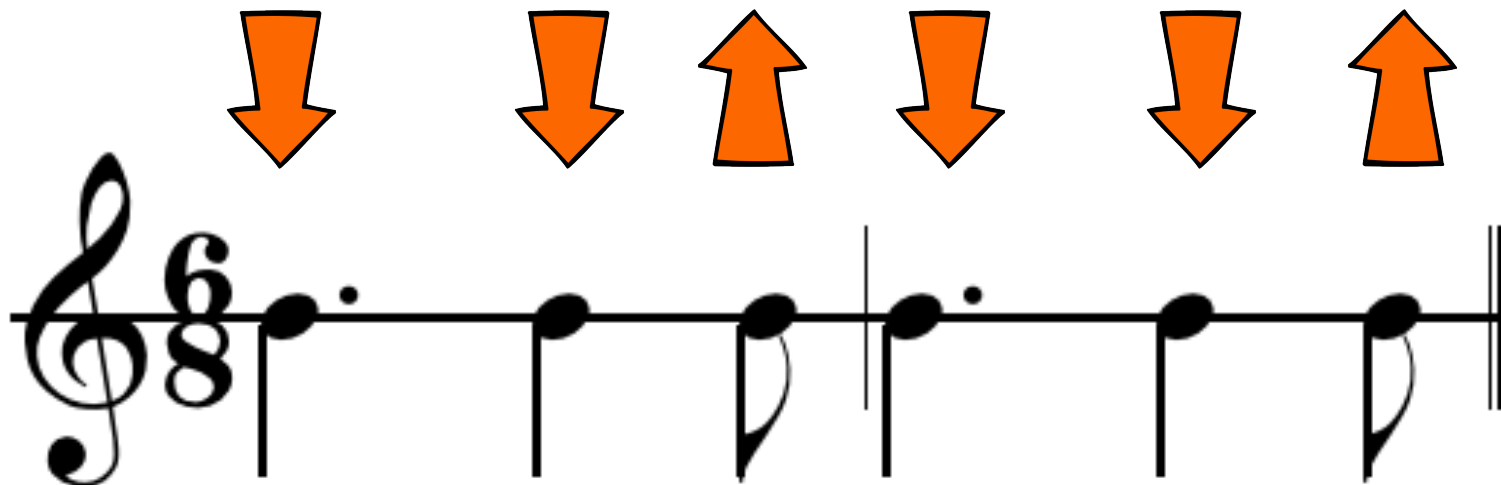
Strumming Pattern Seven:



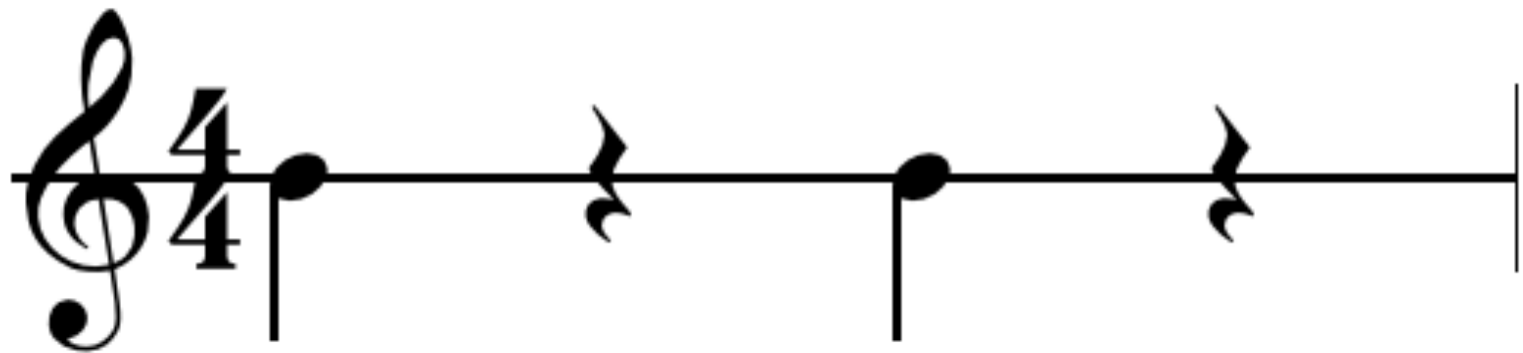
Strumming Pattern Eight:

The image shows a musical staff in 6/8 time with a treble clef. The staff contains two measures of music. The first measure consists of three eighth notes: G4, A4, and B4. The second measure consists of three eighth notes: G4, A4, and B4. Above the staff, blue arrows indicate the strumming direction for each note: a downward arrow for the first note, an upward arrow for the second, and a downward arrow for the third in both measures. A vertical bar line separates the two measures.

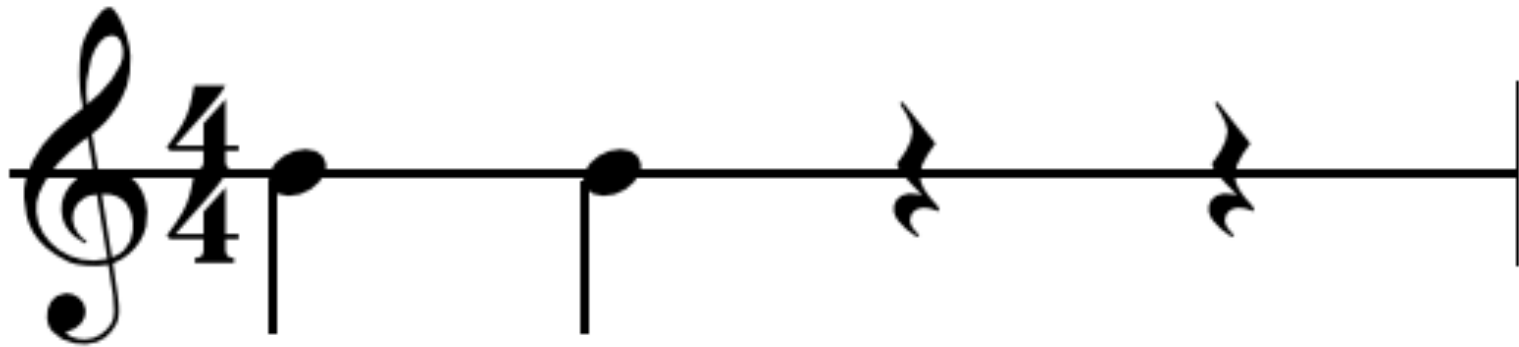
Strumming Pattern Nine:



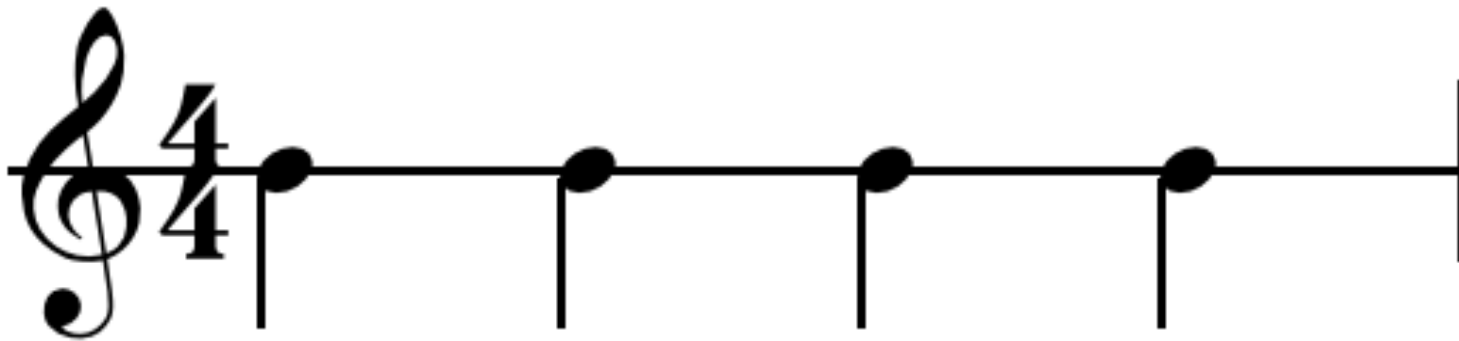
Strumming Pattern One:



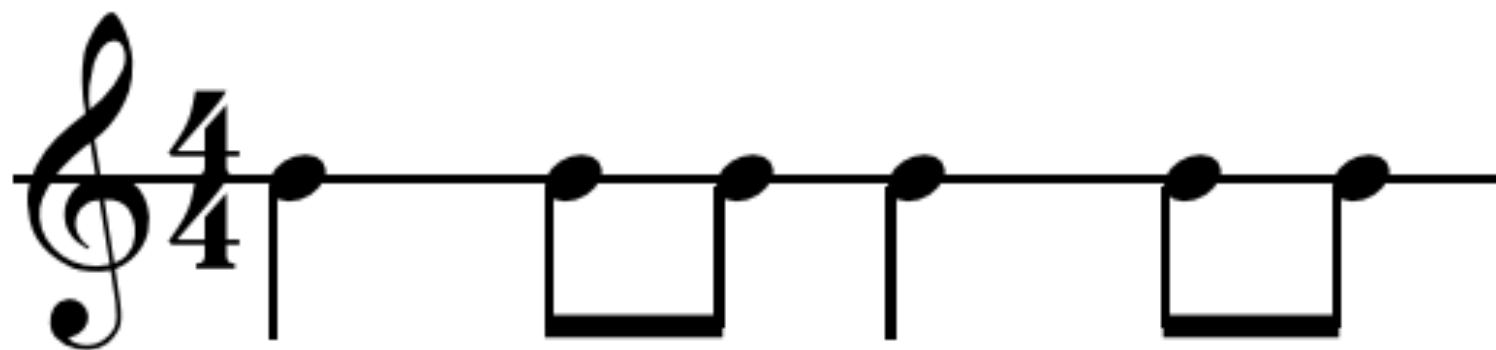
Strumming Pattern Two:



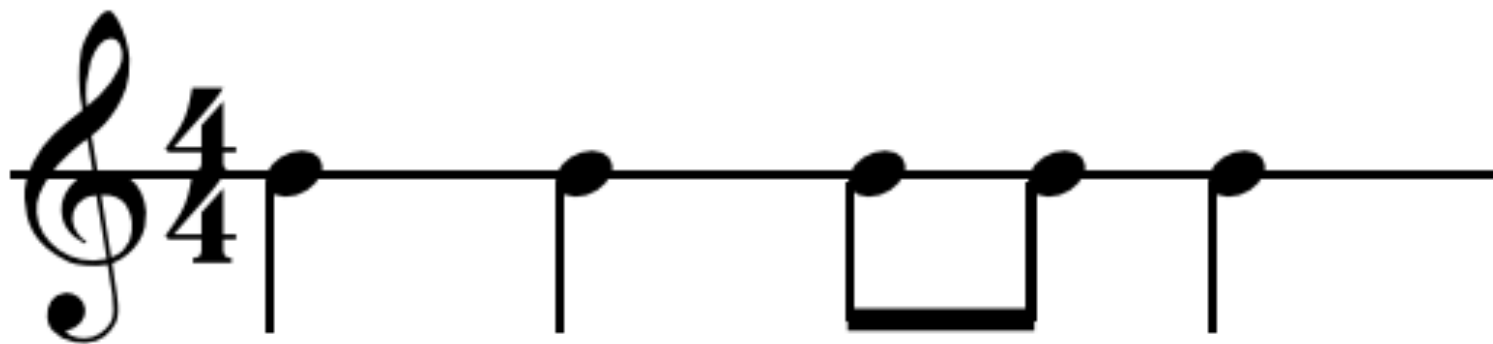
Strumming Pattern Three:



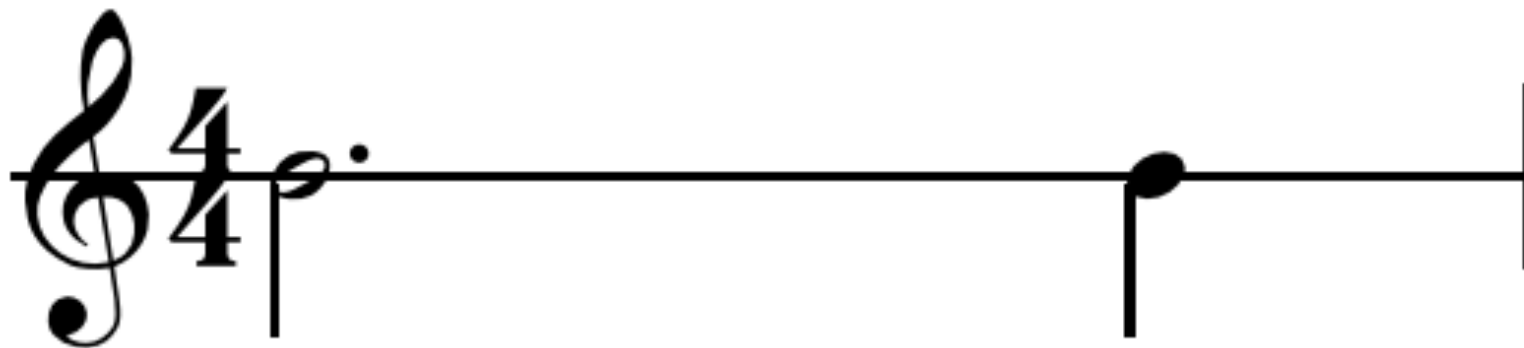
Strumming Pattern Four:



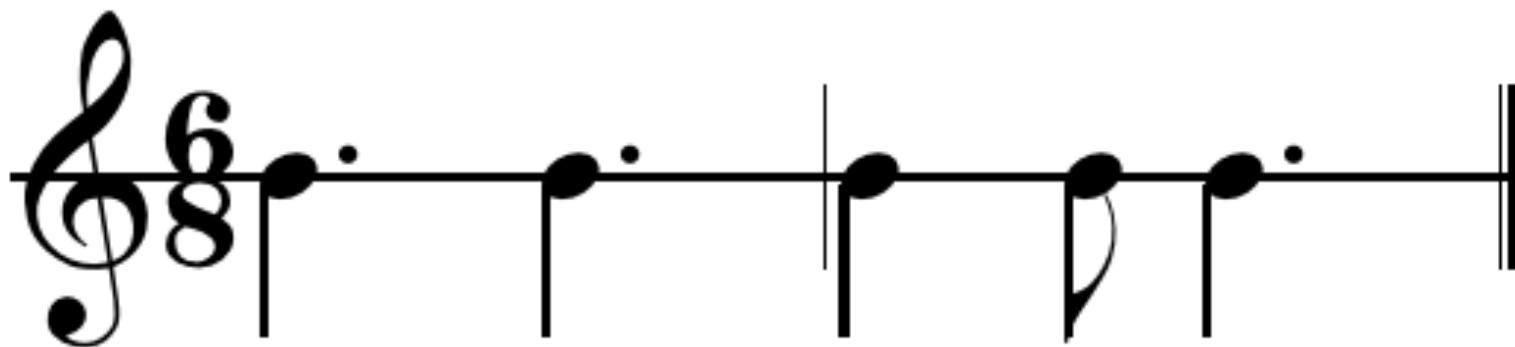
Strumming Pattern Five:



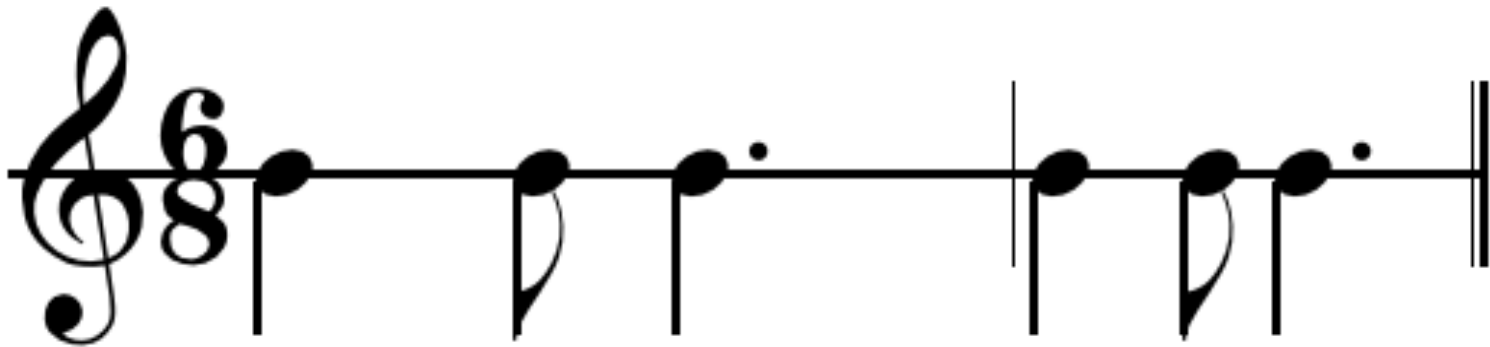
Strumming Pattern Six:



Strumming Pattern Seven:



Strumming Pattern Eight:



Strumming Pattern Nine:

