

Let's practice reading  
some tonal patterns!



Can you tell what tonality  
we're singing?

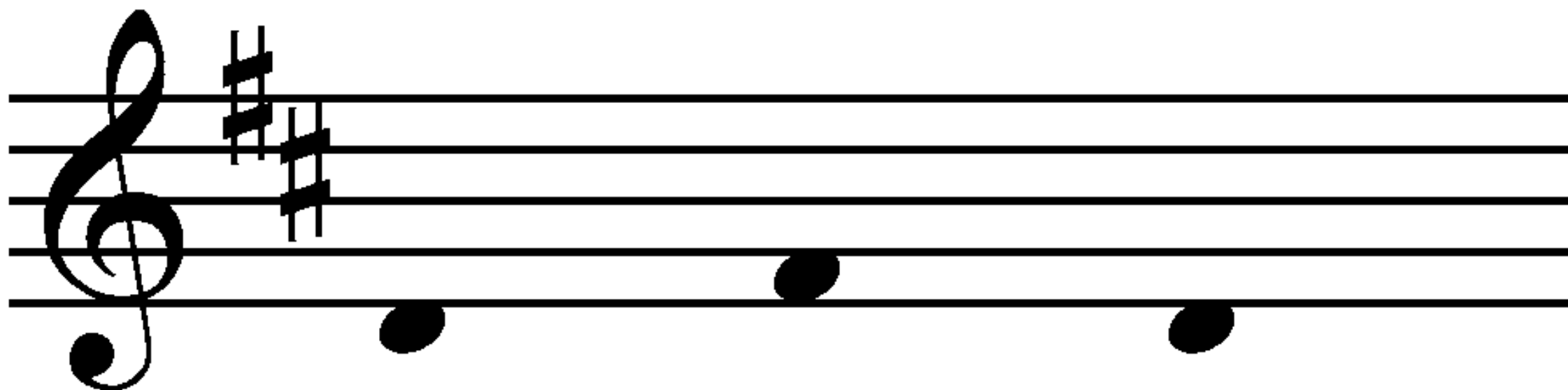


Is it Major or Minor?

How can you tell?

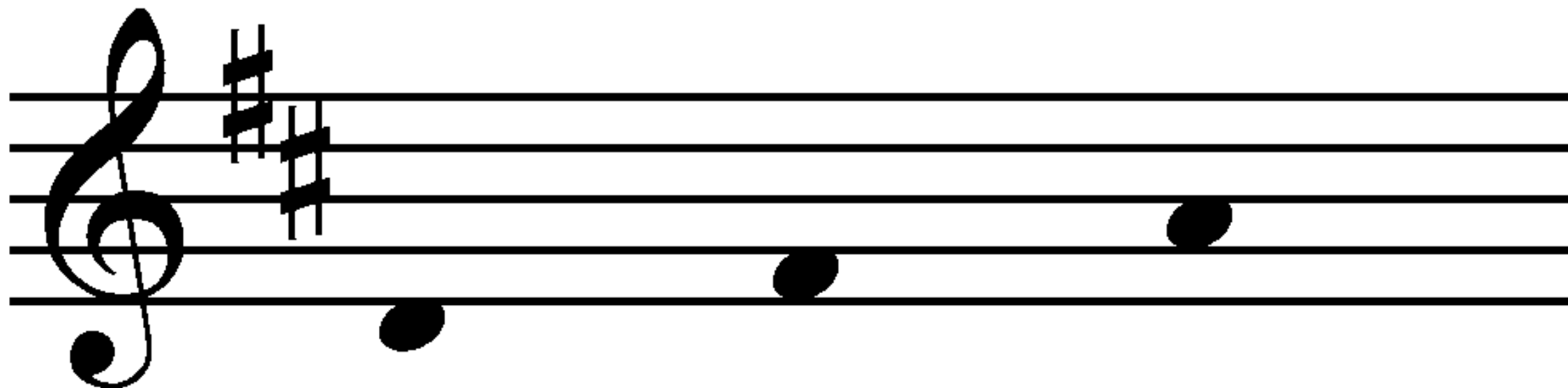


Can you read this pattern?



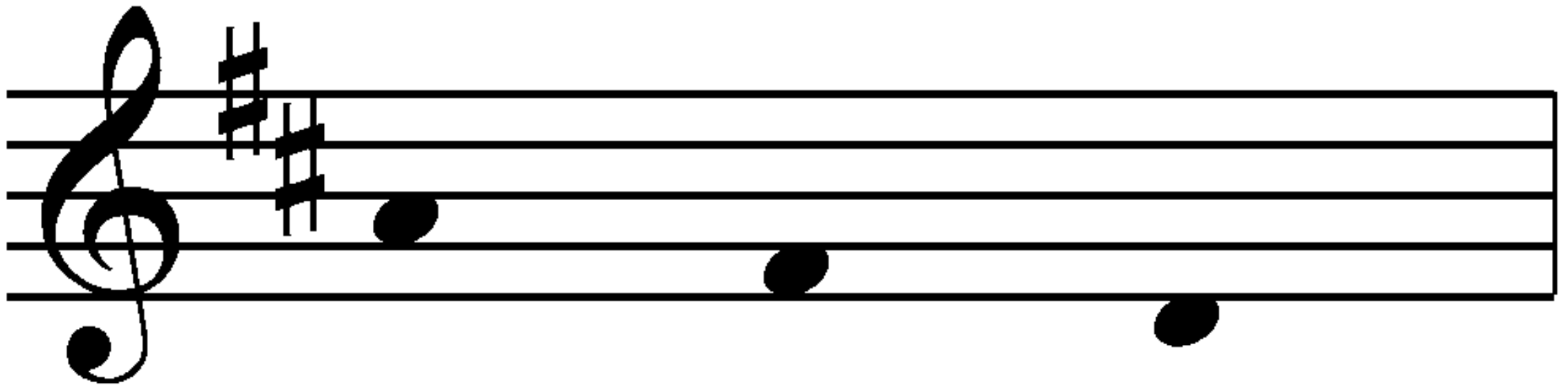


Can you read this pattern?



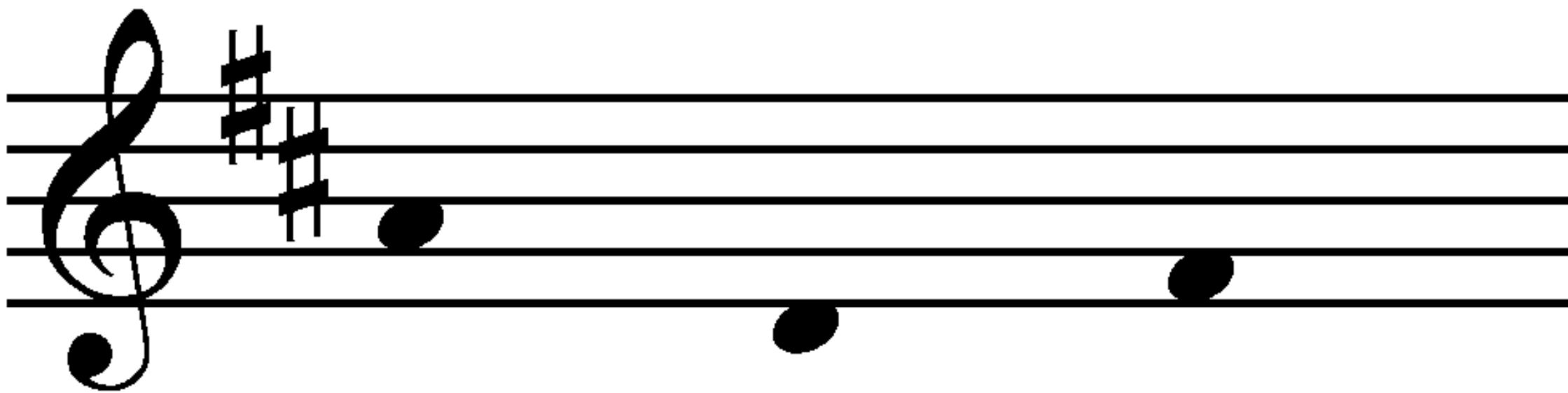


Can you read this pattern?



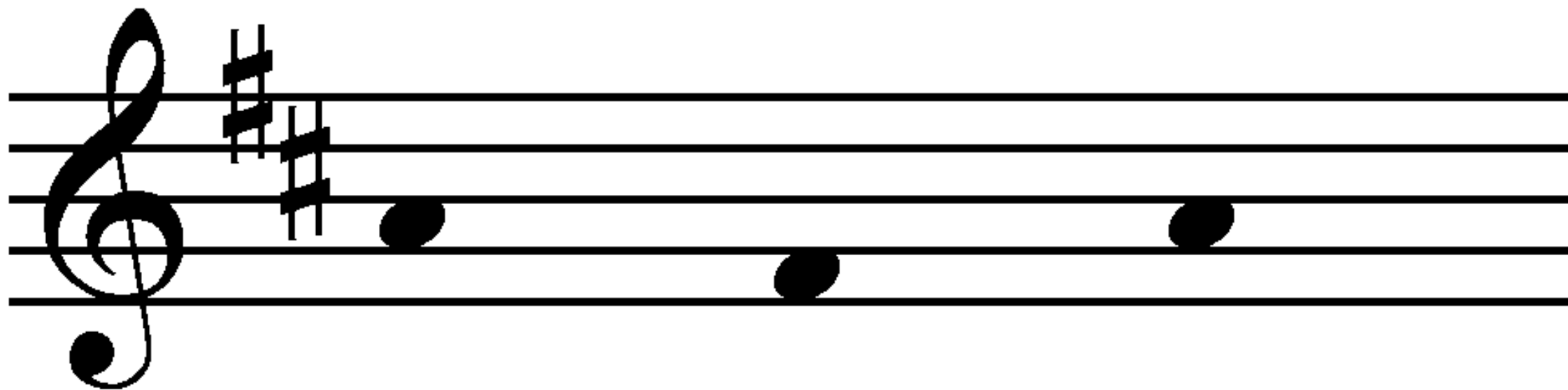


Can you read this pattern?



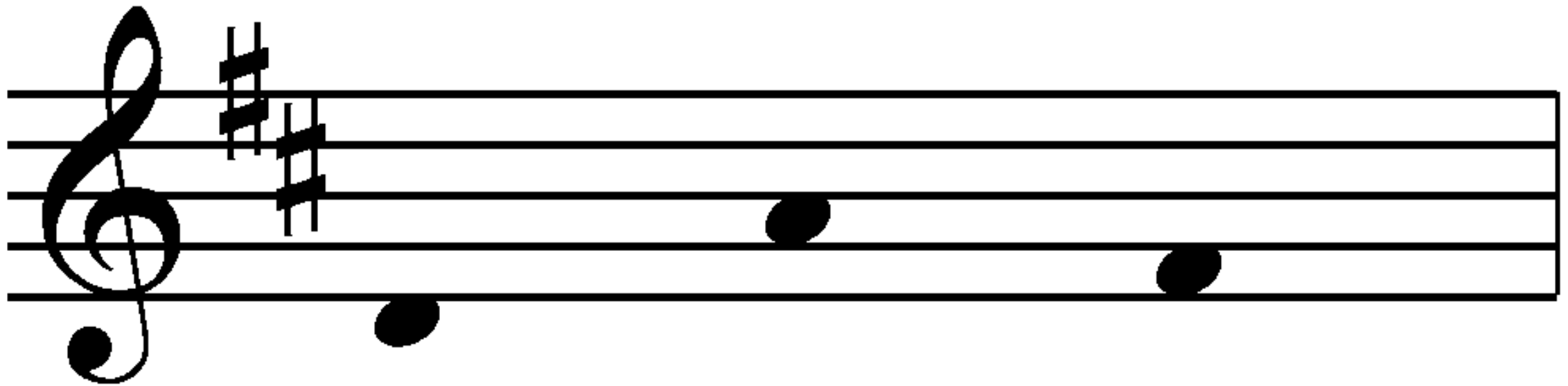


Can you read this pattern?



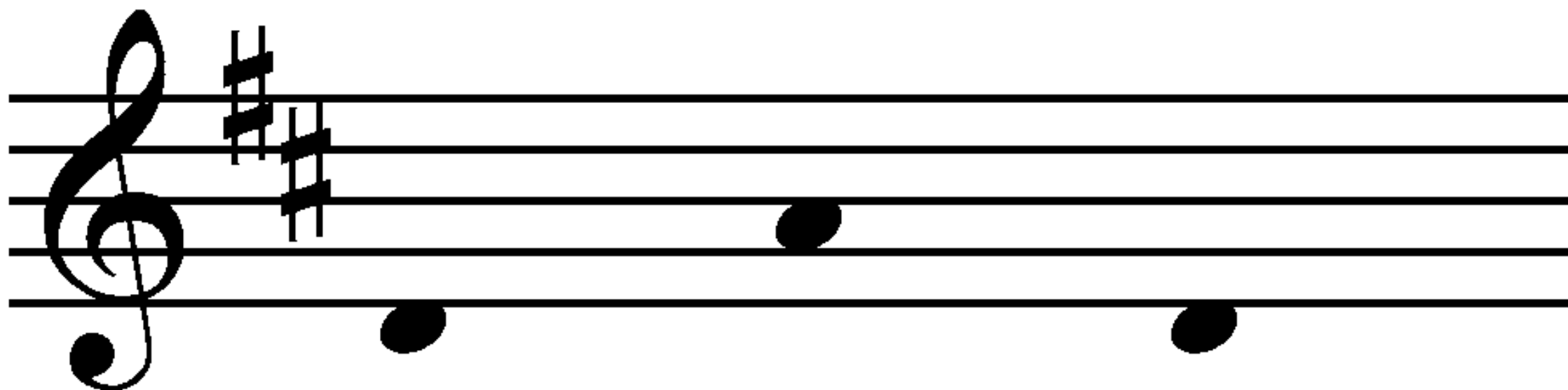


Can you read this pattern?





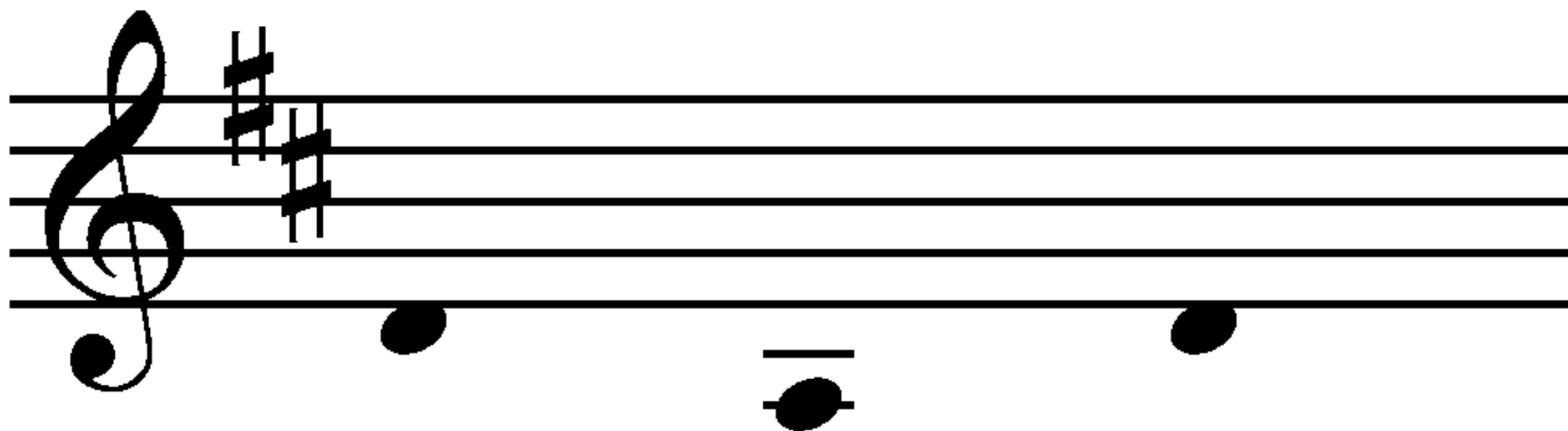
Can you read this pattern?





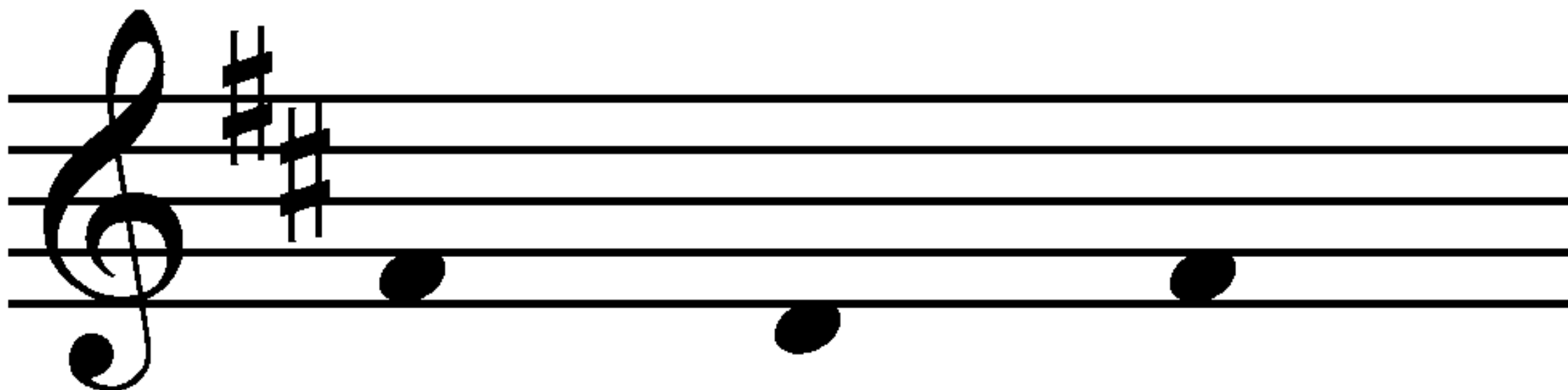


Can you read this pattern?





Can you read this pattern?





Can you read this pattern?

